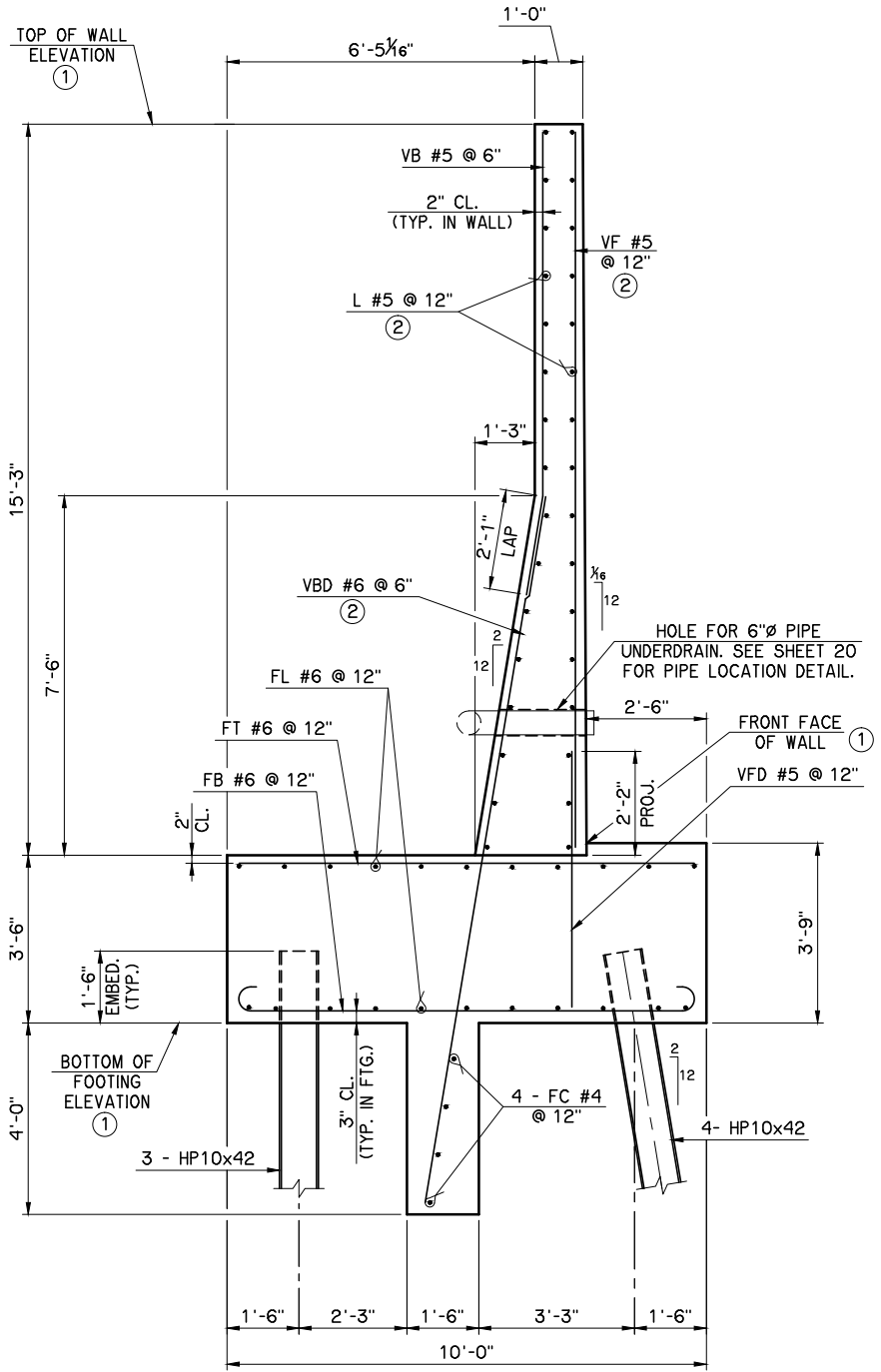
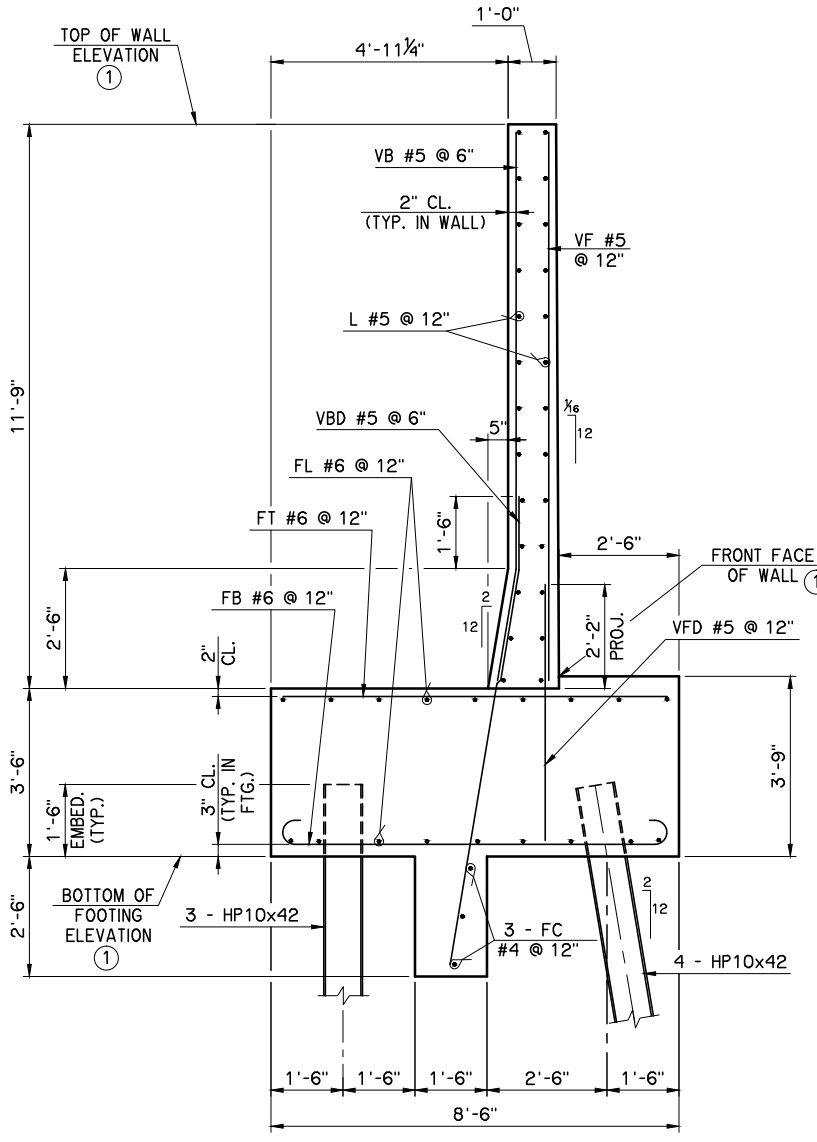


REV. NO.	DESCRIPTION	DATE



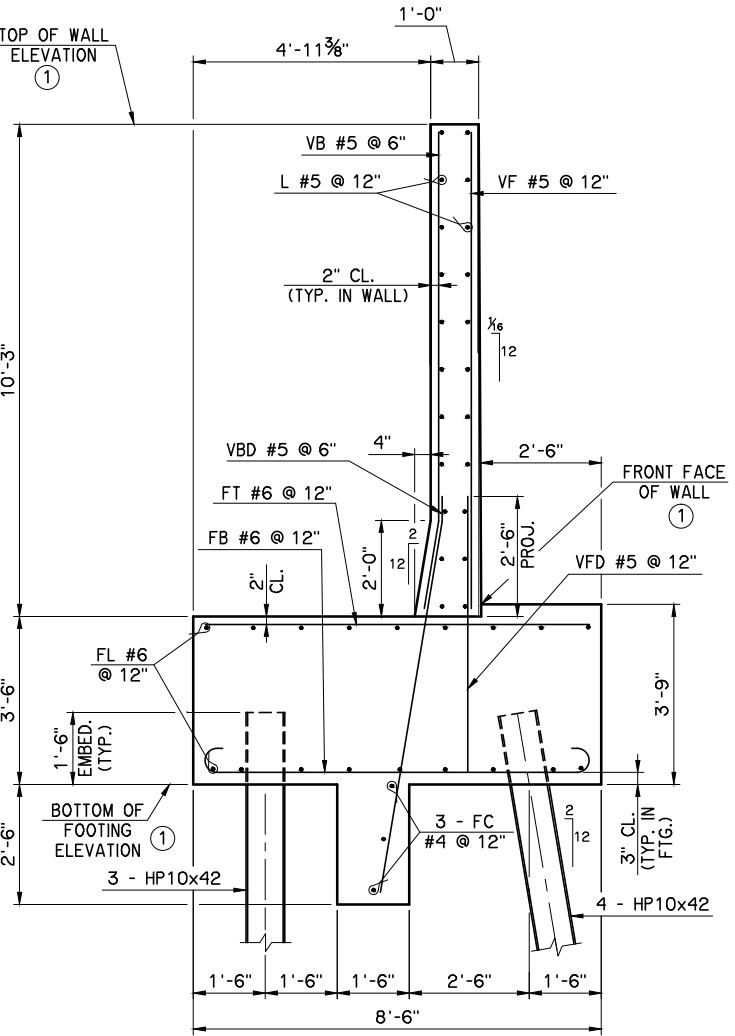
**PANEL TYPE I**

NOTE:  
FOR PLAN VIEW OF  
RETAINING WALL B, PANEL  
NO. 1 FOOTING, SEE  
SHEET 20.

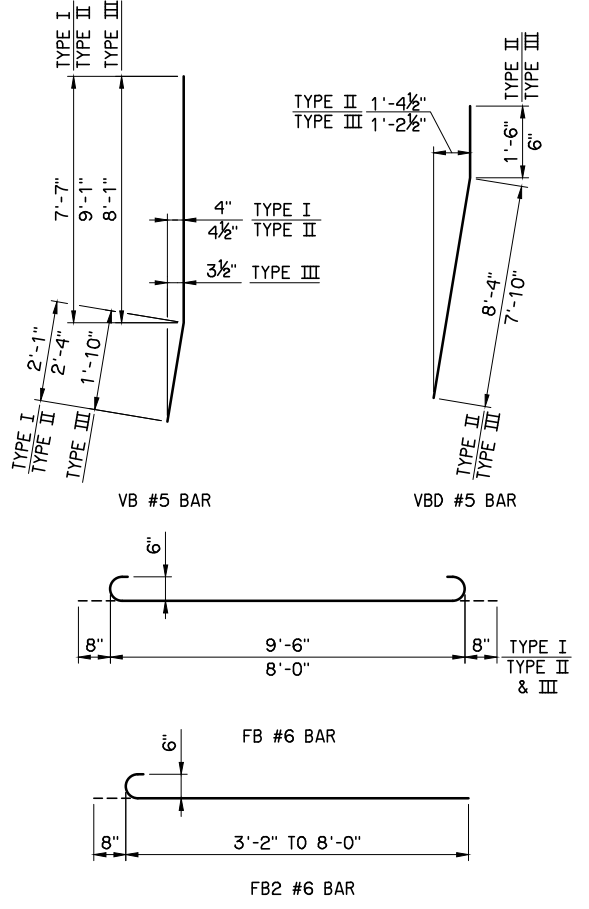


**PANEL TYPE II**

- ① AS SHOWN ON PLAN AND ELEVATION
- ② ADJUST SPACING TO FIT THE HOLE FOR 6" PIPE UNDERDRAIN



**PANEL TYPE III**



RETAINING WALL SCHEDULE				
RET. WALL	PANEL NO.	WALL HEIGHT	HP10x42 PILE LENGTH	
			BACK (1 SHOWN, 3 TOTAL)	FRONT (1 SHOWN, 4 TOTAL)
A	1	10.25'	33'	33'
A	2	11.75'	33'	33'
A	3	15.25'	30'	30'
B	1	15.25'	42'	43'
B	2	11.75'	47'	48'
B	3	10.25'	49'	50'

RETAINING WALL BAR LIST															
RET. WALL	PANEL NO.	PANEL TYPE	L #5 BARS			FC #4 BARS			FL1 #6 BARS			FL2 #6 BAR			
			NO.	FORM	LENGTH	NO.	FORM	LENGTH	NO.	FORM	LENGTH	NO.	FORM	LENGTH	LENGTH VAR.
A	1	III	22	STR.	24'-8"	3	STR.	24'-6"	18	STR.	24'-6"				
A	2	II	26	STR.	24'-8"	3	STR.	24'-6"	18	STR.	24'-6"				
A	3	I	32	STR.	24'-8"	4	STR.	24'-6"	22	STR.	24'-6"				
B	1	I	32	STR.	24'-8"	4	STR.	24'-6"	8	STR.	24'-6"	14	STR.	22'-6" AVG.	20'-10" TO 24'-2"
B	2	II	26	STR.	24'-8"	3	STR.	24'-6"	18	STR.	24'-6"				
B	3	III	22	STR.	24'-8"	3	STR.	24'-6"	18	STR.	24'-6"				

RET. WALL	PANEL NO.	PANEL TYPE	FT1 #6 BARS			FT2 #6 BAR			FB1 #6 BARS			FB2 #6 BAR				VB #5 BARS			VBD BARS			VF #5 BARS			VFD #5 BARS						
			NO.	FORM	LENGTH	NO.	FORM	LENGTH	LENGTH VAR.	NO.	FORM	LENGTH	NO.	FORM	LENGTH	LENGTH VAR.	NO.	FORM	LENGTH	SIZE	NO.	FORM	LENGTH	NO.	FORM	LENGTH	NO.	FORM	LENGTH		
A	1	III	26	STR.	8'-0"						26	BNT.	9'-4"						51	BNT.	9'-11"	#5	51	BNT.	8'-4"	26	STR.	9'-11"	26	STR.	5'-9"
A	2	II	26	STR.	8'-0"						26	BNT.	9'-4"						51	BNT.	11'-5"	#5	51	BNT.	9'-10"	26	STR.	11'-5"	26	STR.	5'-5"
A	3	I	26	STR.	9'-6"						26	BNT.	10'-10"						51	BNT.	9'-8"	#6	51	STR.	14'-11"	26	STR.	14'-11"	26	STR.	5'-5"
B	1	I	22	STR.	9'-6"	4	STR.	5'-7" AVG.	3'-2" TO 8'-0"			22	BNT.	10'-10"	4	BNT.	6'-3" AVG.	3'-10" TO 8'-8"	51	BNT.	9'-8"	#6	51	STR.	14'-11"	26	STR.	14'-11"	26	STR.	5'-5"
B	2	II	26	STR.	8'-0"						26	BNT.	9'-4"						51	BNT.	11'-5"	#5	51	BNT.	9'-10"	26	STR.	11'-5"	26	STR.	5'-5"
B	3	III	26	STR.	8'-0"						26	BNT.	9'-4"						51	BNT.	9'-11"	#5	51	BNT.	8'-4"	26	STR.	9'-11"	26	STR.	5'-9"

S.H. 44 OVER DRY ELK CREEK WASHITA COUNTY

**RETAINING WALL DETAILS**  
SHEET 1 OF 3

Design	AFW
Detail	DRB
Check	AFW

WHITE ENGINEERING ASSOCIATES

STATE OF OKLAHOMA DEPARTMENT OF TRANSPORTATION  
JOB PIECE NO. 28774(O4) SHEET NO. 18

I:\Active\1220\DWG\Retaining wall details.dwg, 2/22/2016 1:42:37 PM, Deanne